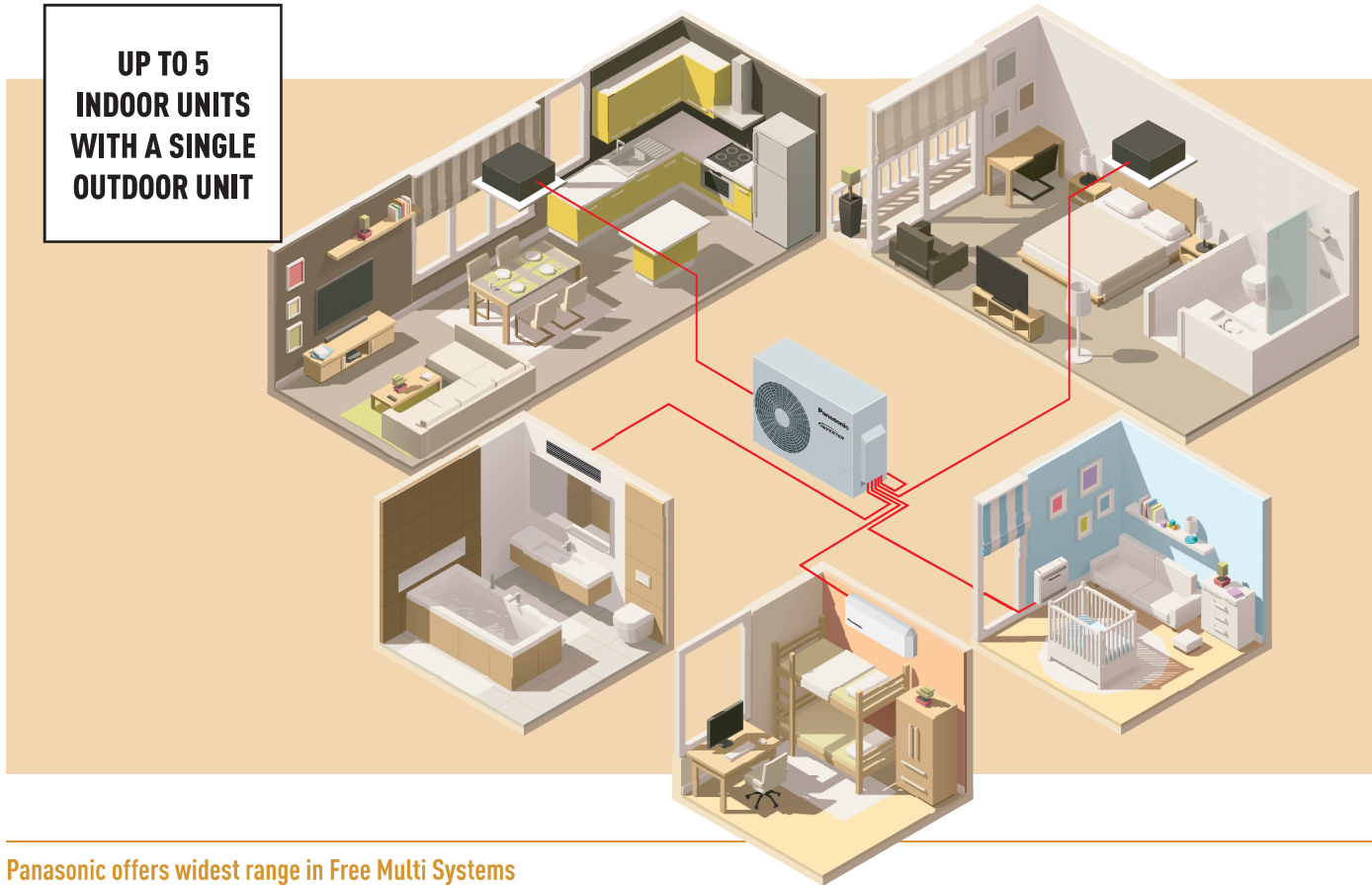


FREE MULTI SYSTEM



**UP TO 5
INDOOR UNITS
WITH A SINGLE
OUTDOOR UNIT**



Panasonic offers widest range in Free Multi Systems

Free Multi System range from 3,50 to 9,00 kW for 5 indoor units with one outdoor unit.

Free Multi Z

Full flexibility up to 9,00 kW and up to 5 ports with wide range of indoor units including high performance Etherea indoor units, reaching up to A+++ / A++

Why a Free Multi System is better than several separate split units

Up to 5 indoor units with a single outdoor unit.

- Just one compact outdoor unit
- Increased comfort in the house since every room has its own indoor unit for heating

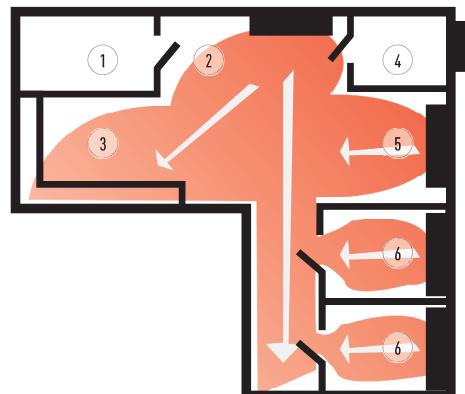
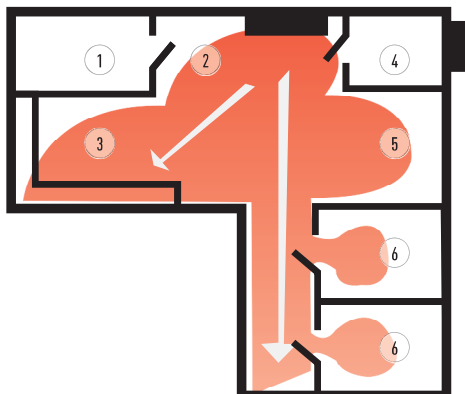
- Much more powerful than a single split
- More efficient since the units are always operating at full capacity
- You can connect all types of indoor units, such as wall types and consoles, depending on what suits your house best

Solution with single split.

One indoor unit is connected to one outdoor unit. The indoor unit is placed in the main hallway and heats the entire house. Certain rooms may not be perfectly heated, which causes inadequate comfort.

Solution with Free Multi System.

With one outdoor unit, you can connect up to five indoor units. There is one indoor unit per room or area. It gives an extreme increase in comfort levels. On the roof, there is only one outdoor unit.



1. Laundry room

2. Entrance

3. Kitchen/dining area

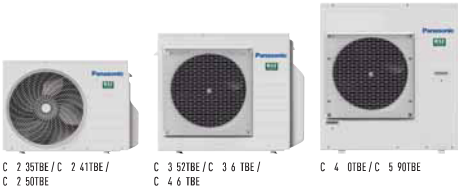
4. Bathroom

5. Living room

6. Bedroom

R32

Free Multi System Z



Outdoor unit Free Multi System Z • R32 GAS

System Capacity (Min - Max Indoor Cooling Capacity Nominal)			3,20 - 6,00 kW	3,20 - 6,00 kW	3,20 - 7,70 kW	4,50 - 9,50 kW	4,50 - 11,20 kW	4,50 - 11,50 kW	4,50 - 14,70 kW	4,50 - 18,30 kW
Unit			CU-2Z35TBE	CU-2Z41TBE	CU-2Z50TBE	CU-3Z52TBE	CU-3Z68TBE	CU-4Z68TBE	CU-4Z80TBE	CU-5Z90TBE
Cooling capacity	Nominal (Min - Max)	kW	3,50(1,50-4,50)	4,10(1,50-5,20)	5,00(1,50-5,40)	5,20(1,80-7,30)	6,80(1,90-8,00)	6,80(1,90-8,80)	8,00(3,00-9,20)	9,00(2,90-11,50)
EER ¹⁾	Nominal (Min - Max)	W/W	4,86(6,00-4,09)A	4,56(6,00-3,80)A	4,24(6,00-3,62)A	4,77 A	3,66(7,04-3,38)A	4,39(5,59-3,56)A	4,04(5,66-3,21)A	4,09(5,27-2,98)A
SEER ²⁾		W/W	8,50 A+++	8,50 A+++	8,50 A+++	8,50 A+++	8,00 A++	8,00 A++	7,90 A++	8,50 A+++
Pdesign (cooling)		kW	3,5	4,1	5,0	5,2	6,8	6,8	8,0	9,0
Input power cooling	Nominal (Min - Max)	kW	0,72(0,25-1,10)	0,90(0,25-1,37)	1,18(0,25-1,49)	1,09(0,36-2,18)	1,86(0,27-2,37)	1,55(0,34-2,47)	1,98(0,53-2,87)	2,20(0,55-3,86)
Annual energy consumption ³⁾		kWh/a	144	169	206	214	298	298	990	1100
Heating capacity	Nominal (Min - Max)	kW	4,20(1,10-5,60)	4,60(1,10-7,00)	5,60(1,10-7,20)	6,80(1,60-8,30)	8,50(3,30-10,40)	8,50(3,00-10,60)	9,40(4,20-10,60)	10,40(3,40-14,50)
Heating capacity at -7 °C		kW	—	—	—	3,95	4,45	4,45	—	—
COP ¹⁾	Nominal (Min - Max)	W/W	4,88(5,24-4,18)A	4,79(5,24-3,91)A	4,63(5,24-4,00)A	4,63(5,00-3,82)A	3,95(5,32-3,64)A	4,47(5,17-3,96)A	4,63(6,00-3,46)A	4,84(6,42-3,42)A
SCOP ²⁾		W/W	4,60 A++	4,60 A++	4,60 A++	4,20 A+	4,20 A+	4,20 A+	4,70 A++	4,68 A+++
Pdesign at -10 °C		kW	3,2	3,5	4,2	5,0	5,2	5,8	6,8	8,5
Input power heating	Nominal (Min - Max)	kW	0,86(0,21-1,34)	0,96(0,21-1,79)	1,21(0,21-1,80)	1,47(0,32-2,17)	2,15(0,62-2,86)	1,90(0,58-2,68)	2,03(0,70-3,06)	2,15(0,53-4,24)
Annual energy consumption ³⁾		kWh/a	974	1065	1278	1667	1733	1933	2026	2543
Current	Cool / Heat	A	3,35/4,00	4,15/4,45	5,35/5,50	5,00/6,70	8,40/9,70	7,00/8,60	9,50/9,50	10,50/10,10
Power source		V	230	230	230	230	230	230	230	230
Recommended fuse		A	16	16	16	16	16	20	20	25
Recommended power cable section		mm ²	2,5	2,5	2,5	2,5	2,5	2,5	2,5	3,5
Sound pressure ⁴⁾	Cool / Heat (Hi)	dB(A)	48/50	48/50	50/52	47/48	51/52	49/50	51/52	53/54
Dimension ⁵⁾	H x W x D	mm	619 x 824 x 299	619 x 824 x 299	619 x 824 x 299	795 x 875 x 320	795 x 875 x 320	795 x 875 x 320	999 x 940 x 340	999 x 940 x 340
Net weight		kg	39	39	39	71	71	72	80	81
Piping connections	Liquid pipe	Inch (mm)	1/4(6,35)	1/4(6,35)	1/4(6,35)	1/4(6,35)	1/4(6,35)	1/4(6,35)	1/4(6,35)	1/4(6,35)
	Gas pipe	Inch (mm)	3/8(9,52)	3/8(9,52)	3/8(9,52)	3/8(9,52)	3/8(9,52)	3/8(9,52)	3/8(9,52)	3/8(9,52)
Pipe length range total ⁶⁾		m	6-30	6-30	6-30	6-50	6-60	6-60	6-70	6-80
Pipe length range to one unit		m	3-20	3-20	3-20	3-25	3-25	3-25	3-25	3-25
Elevation difference (in/out)		m	10	10	10	15	15	15	15	15
Pipe length for additional gas		m	20	20	20	30	30	30	45	45
Additional gas amount		g/m	15	15	15	20	20	20	20	20
Refrigerant (R32)		kg/TCO ₂ Eq.	1,12/0,756	1,12/0,756	1,12/0,756	2,10/1,418	2,10/1,418	2,10/1,418	2,72/1,836	2,72/1,836
Operating range	Cool Min ~ Max	°C	-10 ~ +46	-10 ~ +46	-10 ~ +46	-10 ~ +46	-10 ~ +46	-10 ~ +46	-10 ~ +46	-10 ~ +46
	Heat Min ~ Max	°C	-15 ~ +24	-15 ~ +24	-15 ~ +24	-15 ~ +24	-15 ~ +24	-15 ~ +24	-15 ~ +24	-15 ~ +24

1) EER and COP calculation is based in accordance to E 14511. 2) Energy Label Scale from A+++ to D. 3) The annual energy consumption is calculated in accordance to E /626/2011. 4) The sound pressure of the units shows the value measured of a position 1 m in front of the main body and 0,7 m below the unit. The sound pressure is measured in accordance with Eurovent 6/C/006 97 specification. 5) Add 70 or 95mm for piping port. 6) minimum piping length is 3 meters per indoor unit. minimum quantity of connection: 2 indoor units.

Possible outdoor / indoor units combinations • R32 GAS

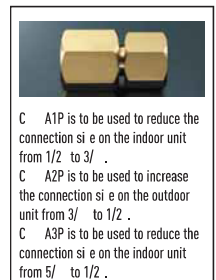
	Wall Mounted TZ Compact Style							NEW Floor Console*							NEW 4 Way 60x60 Cassette							NEW Low Static Pressure Hide Away									
	16	20	25	35	42	50	71	16	20	25	35	42	50	60	71	16	20	25	35	42	50	60	71	16	20	25	35	42	50	60	71
CU-2Z35TBE // 3,20 - 6,00 kW // 2 Rooms	✓	✓	✓	✓	✓	✓	✓	✓	✓	✓	✓	✓	✓	✓	✓	✓	✓	✓	✓	✓	✓	✓	✓	✓	✓	✓	✓	✓	✓	✓	✓
CU-2Z41TBE // 3,20 - 6,00 kW // 2 Rooms	✓	✓	✓	✓	✓	✓	✓	✓	✓	✓	✓	✓	✓	✓	✓	✓	✓	✓	✓	✓	✓	✓	✓	✓	✓	✓	✓	✓	✓	✓	✓
CU-2Z50TBE // 3,20 - 7,70 kW // 2 Rooms	✓	✓	✓	✓	✓	✓	✓	✓	✓	✓	✓	✓	✓	✓	✓	✓	✓	✓	✓	✓	✓	✓	✓	✓	✓	✓	✓	✓	✓	✓	✓
CU-3Z52TBE // 4,50 - 9,50 kW // 3 Rooms	✓	✓	✓	✓	✓	✓	✓	✓	✓	✓	✓	✓	✓	✓	✓	✓	✓	✓	✓	✓	✓	✓	✓	✓	✓	✓	✓	✓	✓	✓	✓
CU-3Z68TBE // 4,50 - 11,20 kW // 3 Rooms	✓	✓	✓	✓	✓	✓	✓	✓	✓	✓	✓	✓	✓	✓	✓	✓	✓	✓	✓	✓	✓	✓	✓	✓	✓	✓	✓	✓	✓	✓	✓
CU-4Z68TBE // 4,50 - 11,50 kW // 4 Rooms	✓	✓	✓	✓	✓	✓	✓	✓	✓	✓	✓	✓	✓	✓	✓	✓	✓	✓	✓	✓	✓	✓	✓	✓	✓	✓	✓	✓	✓	✓	✓
CU-4Z80TBE // 4,50 - 14,70 kW // 4 Rooms	✓	✓	✓	✓	✓	✓	✓	✓	✓	✓	✓	✓	✓	✓	✓	✓	✓	✓	✓	✓	✓	✓	✓	✓	✓	✓	✓	✓	✓	✓	✓
CU-5Z90TBE // 4,50 - 18,30 kW // 5 Rooms	✓	✓	✓	✓	✓	✓	✓	✓	✓	✓	✓	✓	✓	✓	✓	✓	✓	✓	✓	✓	✓	✓	✓	✓	✓	✓	✓	✓	✓	✓	✓

1) A/C A1P pipe reducer is needed on the 42 and 50, a C A2P pipe e pander is needed on the 60 and 71, and C A3P pipe reducer on the 71. Compatible only with 2 ports outdoor C 2 35TBE / C 2 41TBE / C 2 50TBE.

Outdoor Multi combination model

	Model
CS-MTZ16TKE CS-TZ20TKEW-1 / CS-MZ20UFEA / CS-MZ20UB4EA / CS-MZ20UD3EA CS-TZ25TKEW-1 / CS-Z25UFEAW / CS-Z25UB4EAW / CS-Z25UD3EAW CS-TZ35TKEW-1 / CS-Z35UFEAW / CS-Z35UB4EAW / CS-Z35UD3EAW	CU-2Z35TBE / CU-2Z41TBE / CU-2Z50TBE / CU-3Z52TBE / CU-3Z68TBE / CU-4Z68TBE / CU-4Z80TBE / CU-5Z90TBE
CS-TZ42TKEW-1 CS-TZ50TKEW / CS-Z50UFEAW / CS-Z50UB4EAW / CS-Z50UD3EAW	CU-2Z50TBE / CU-3Z52TBE / CU-3Z68TBE / CU-4Z68TBE / CU-4Z80TBE / CU-5Z90TBE
CS-TZ60TKEW / CS-Z60UB4EAW / CS-Z60UD3EAW	CU-3Z68TBE / CU-4Z68TBE / CU-4Z80TBE / CU-5Z90TBE
CS-TZ71TKEW	CU-4Z80TBE / CU-5Z90TBE

For C A3P necessary to use adaptor C A2P too.



Free Multi System Z

R32



Wall Mounted TZ Compact Style	Indoor unit	Cooling capacity	Heating capacity	Connection in. / out.	Sound pressure ¹	Dimension / Net weight	Piping connections	
		kW / kCal/h	kW / kCal/h		mm ²¹	Cool — Heat (Hi/Lo/S-Lo)	HxWxD	Liquid / Gas pipe
						dB(A)	mm / kg	Inch (mm)
1,60 kW	CS-MTZ16TKE	1,60/1380	2,60/2240	4 x 1,5	38/27/22 — 39/28/24	290 x 799 x 197/8	1/4 (6,35) / 3/8 (9,52)	
2,00 kW	CS-TZ20TKEW-1	2,00/1720	3,20/2750	4 x 1,5	39/27/22 — 40/28/24	290 x 799 x 197/8	1/4 (6,35) / 3/8 (9,52)	
2,50 kW	CS-TZ25TKEW-1	2,50/2150	3,60/3100	4 x 1,5	42/28/22 — 42/29/24	290 x 799 x 197/8	1/4 (6,35) / 3/8 (9,52)	
3,50 kW ²¹	CS-TZ35TKEW-1	3,50/3010	4,50/3870	4 x 1,5	44/32/22 — 44/35/24	290 x 799 x 197/8	1/4 (6,35) / 3/8 (9,52)	
4,20 kW	CS-TZ42TKEW-1	4,20/3610	5,00/4300	4 x 1,5	44/33/31 — 46/37/30	290 x 799 x 197/8	1/4 (6,35) / 3/8 (9,52)	
5,00 kW	CS-TZ50TKEW	5,00/4300	5,30/4558	4 x 1,5	44/39/36 — 46/39/36	302 x 1102 x 244/12	1/4 (6,35) / 3/8 (9,52)	
6,00 kW	CS-TZ60TKEW	6,00/5160	8,50/7310	4 x 1,5	44/39/36 — 47/39/36	302 x 1102 x 244/12	1/4 (6,35) / 1/2 (12,70)	
7,10 kW	CS-TZ71TKEW	7,10/6110	8,70/7482	4 x 1,5	49/40/37 — 49/40/37	302 x 1102 x 244/13	1/4 (6,35) / 1/2 (12,70)	



NEW Floor Console ³¹ *	Indoor	Cooling capacity	Heating capacity	Connection in. / out.	Sound pressure ¹	Dimension / Net weight	Piping connections	
		kW / kCal/h	kW / kCal/h		mm ²¹	Cool — Heat (Hi/Lo/S-Lo)	HxWxD	Liquid / Gas pipe
						dB(A)	mm / kg	Inch (mm)
2,00 kW	CS-MZ20UFEA	2,00/1720	3,20/2750	4 x 1,5	39/27/22 — 39/27/21	600 x 750 x 207/13	1/4 (6,35) / 3/8 (9,52)	
2,50 kW	CS-Z25UFEAW	2,50/2150	3,60/3100	4 x 1,5	40/27/22 — 40/27/21	600 x 750 x 207/13	1/4 (6,35) / 3/8 (9,52)	
3,50 kW ²¹	CS-Z35UFEAW	3,50/3010	4,50/3870	4 x 1,5	41/28/22 — 41/28/21	600 x 750 x 207/13	1/4 (6,35) / 3/8 (9,52)	
5,00 kW	CS-Z50UFEAW	5,00/4300	5,30/4558	4 x 1,5	44/33/29 — 48/35/31	600 x 750 x 207/13	1/4 (6,35) / 3/8 (9,52)	



NEW C BT20EW RAL9010 panel for 4 Way 60 60 Cassette (sold separately)



NEW 4 Way 60x60 Cassette*	Indoor / Panel	Cooling capacity	Heating capacity	Connection indoor / outdoor	Sound pressure ¹	Dimension / Net weight		Piping connections	
		kW / kCal/h	kW / kCal/h		mm ²	Cool — Heat (Hi/Lo/S-Lo)	Indoor HxWxD	Panel HxWxD	Liquid / Gas pipe
						dB(A)	mm / kg	mm / kg	Inch (mm)
2,00 kW	CS-MZ20UB4EA / CZ-BT20EW	2,00/1720	3,20/2750	4 x 1,5	35/27/24 — 36/30/27	260 x 575 x 575/18	51 x 700 x 700/2,5	1/4 (6,35) / 3/8 (9,52)	
2,50 kW	CS-Z25UB4EAW / CZ-BT20EW	2,50/2150	3,60/3100	4 x 1,5	36/27/24 — 37/30/27	260 x 575 x 575/18	51 x 700 x 700/2,5	1/4 (6,35) / 3/8 (9,52)	
3,50 kW ²¹	CS-Z35UB4EAW / CZ-BT20EW	3,50/3010	4,50/3870	4 x 1,5	36/28/25 — 37/30/27	260 x 575 x 575/18	51 x 700 x 700/2,5	1/4 (6,35) / 3/8 (9,52)	
5,00 kW ⁴¹	CS-Z50UB4EAW / CZ-BT20EW	5,00/4300	6,80/5850	4 x 1,5	39/30/27 — 40/31/28	260 x 575 x 575/18	51 x 700 x 700/2,5	1/4 (6,35) / 3/8 (9,52)	
6,00 kW	CS-Z60UB4EAW / CZ-BT20EW	6,00/5160	8,50/7310	4 x 1,5	44/34/31 — 45/34/31	260 x 575 x 575/18	51 x 700 x 700/2,5	1/4 (6,35) / 1/2 (12,70)	



NEW Low Static Pressure Hide Away*	Indoor	Cooling capacity	Heating capacity	Connection indoor / outdoor	Sound pressure ¹	Dimension / Net weight	Piping connections	
		kW / kCal/h	kW / kCal/h		mm ²	Cool — Heat (Hi/Lo/S-Lo)	HxWxD	Liquid / Gas pipe
						dB(A)	mm / kg	Inch (mm)
2,00 kW	CS-MZ20UD3EA	2,00/1720	3,20/2750	4 x 1,5	34/29/26 — 36/29/26	200 x 750 x 640/19	1/4 (6,35) / 3/8 (9,52)	
2,50 kW	CS-Z25UD3EAW	2,50/2150	3,60/3100	4 x 1,5	35/29/26 — 37/29/26	200 x 750 x 640/19	1/4 (6,35) / 3/8 (9,52)	
3,50 kW ²¹	CS-Z35UD3EAW	3,50/3010	4,50/3870	4 x 1,5	35/29/26 — 37/29/26	200 x 750 x 640/19	1/4 (6,35) / 3/8 (9,52)	
5,00 kW ⁴¹	CS-Z50UD3EAW	5,00/4300	6,80/5850	4 x 1,5	41/31/28 — 41/32/29	200 x 750 x 640/19	1/4 (6,35) / 3/8 (9,52)	
6,00 kW	CS-Z60UD3EAW	6,00/5160	8,50/7310	4 x 1,5	43/32/29 — 43/34/31	200 x 750 x 640/19	1/4 (6,35) / 1/2 (12,70)	

1) The sound pressure of the units shows the value measured of a position 1m in front of the main body. The sound pressure is measured in accordance with Eurovent 6/C/006 97 specification. 2) The heating capacity is 4,20 W connected to a C 2 35TBE. 3) Compatible only with 2 ports Outdoor C 2 35TBE / C 2 41TBE / C 2 50TBE. 4) The heating capacity is 5,30 W connected to a C 2 50TBE. Tentative data.

FREE MULTI R32 COMBINATIONS TABLE

Free Multi 2x1 CU-2Z35TBE. Minimum capacity connected: 3,20 kW. Maximum capacity connected: 6,00 kW • R32 GAS

Indoor unit capacity	Cooling capacity (kW) Rooms					EER	SEER ¹	Input power rating			Heating capacity (kW) Rooms				COP	SCOP ¹	Input power rating		
	A	B	Total (Min-Max)	W/W	W/W			kW	kWh	230V	A	B	Total (Min-Max)	W/W			W/W	kW	kWh
1 Room																			
16	1,60		1,60(1,10-2,30)	3,90	A		0,41(0,22-0,60)	205	1,95	2,60		2,60(0,70-3,80)	3,77	A		0,69(0,17-1,11)	345	3,20	
20	2,00		2,00(1,10-2,90)	3,85	A		0,52(0,22-0,77)	260	2,45	3,20		3,20(0,70-4,80)	3,76	A		0,85(0,17-1,41)	425	3,95	
25	2,50		2,50(1,10-3,50)	3,73	A		0,67(0,22-1,00)	335	3,15	3,60		3,60(0,70-5,50)	3,50	B		1,03(0,17-1,70)	515	4,75	
35	3,50		3,50(1,10-4,00)	3,47	A		1,01(0,22-1,22)	505	4,70	4,20		4,20(0,70-5,60)	3,44	B		1,22(0,17-1,68)	610	5,65	
2 Rooms																			
16+16	1,60	1,60	3,20(1,50-4,00)	4,92	A	8,50	0,65(0,25-1,00)	325	3,05	2,10	2,10	4,20(1,10-5,60)	4,88	A	4,60	0,86(0,21-1,34)	430	4,00	
16+20	1,55	1,95	3,50(1,50-4,50)	4,86	A	8,50	0,72(0,25-1,10)	360	3,35	1,85	2,35	4,20(1,10-5,60)	4,88	A	4,60	0,86(0,21-1,34)	430	4,00	
16+25	1,35	2,15	3,50(1,50-4,50)	4,86	A	8,50	0,72(0,25-1,10)	360	3,35	1,65	2,55	4,20(1,10-5,60)	4,88	A	4,60	0,86(0,21-1,34)	430	4,00	
16+35	1,10	2,40	3,50(1,50-4,50)	4,86	A	8,50	0,72(0,25-1,10)	360	3,35	1,30	2,90	4,20(1,10-5,60)	4,88	A	4,60	0,86(0,21-1,34)	430	4,00	
20+20	1,75	1,75	3,50(1,50-4,50)	4,86	A	8,50	0,72(0,25-1,10)	360	3,35	2,10	2,10	4,20(1,10-5,60)	4,88	A	4,60	0,86(0,21-1,34)	430	4,00	
20+25	1,55	1,95	3,50(1,50-4,50)	4,86	A	8,50	0,72(0,25-1,10)	360	3,35	1,85	2,35	4,20(1,10-5,60)	4,88	A	4,60	0,86(0,21-1,34)	430	4,00	
20+35	1,25	2,25	3,50(1,50-4,50)	5,07	A	8,50	0,69(0,25-1,05)	345	3,25	1,55	2,65	4,20(1,10-5,60)	5,00	A	4,60	0,84(0,21-1,29)	420	3,90	
25+25	1,75	1,75	3,50(1,50-4,50)	5,07	A	8,50	0,69(0,25-1,05)	345	3,25	2,10	2,10	4,20(1,10-5,60)	5,00	A	4,60	0,84(0,21-1,29)	420	3,90	
25+35	1,45	2,05	3,50(1,50-4,50)	5,07	A	8,50	0,69(0,25-1,05)	345	3,25	1,75	2,45	4,20(1,10-5,60)	5,00	A	4,60	0,84(0,21-1,29)	420	3,90	

Free Multi 2x1 CU-2Z41TBE. Minimum capacity connected: 3,20 kW. Maximum capacity connected: 6,00 kW • R32 GAS

Indoor unit capacity	Cooling capacity (kW) Rooms					EER	SEER ¹	Input power rating			Heating capacity (kW) Rooms				COP	SCOP ¹	Input power rating		
	A	B	Total (Min-Max)	W/W	W/W			kW	kWh	230V	A	B	Total (Min-Max)	W/W			W/W	kW	kWh
1 Room																			
16	1,60		1,60(1,10-2,30)	3,90	A		0,41(0,22-0,60)	205	1,95	2,60		2,60(0,70-3,80)	3,77	A		0,69(0,17-1,11)	345	3,20	
20	2,00		2,00(1,10-2,90)	3,85	A		0,52(0,22-0,77)	260	2,45	3,20		3,20(0,70-4,80)	3,76	A		0,85(0,17-1,41)	425	3,95	
25	2,50		2,50(1,10-3,50)	3,73	A		0,67(0,22-1,00)	335	3,15	3,60		3,60(0,70-5,50)	3,50	B		1,03(0,17-1,70)	515	4,75	
35	3,50		3,50(1,10-4,00)	3,47	A		1,01(0,22-1,22)	505	4,70	4,50		4,50(0,70-6,20)	3,60	B		1,25(0,17-1,81)	625	5,80	
2 Rooms																			
16+16	1,60	1,60	3,20(1,50-4,00)	4,71	A	8,50	0,68(0,25-0,99)	340	3,15	2,20	2,20	4,40(1,10-7,00)	4,68	A	4,60	0,94(0,21-1,81)	470	4,35	
16+20	1,60	2,00	3,60(1,50-4,50)	4,62	A	8,50	0,78(0,25-1,15)	390	3,60	2,05	2,55	4,60(1,10-7,00)	4,79	A	4,60	0,96(0,21-1,79)	480	4,45	
16+25	1,60	2,50	4,10(1,50-5,20)	4,56	A	8,50	0,90(0,25-1,37)	450	4,15	1,80	2,80	4,60(1,10-7,00)	4,79	A	4,60	0,96(0,21-1,79)	480	4,45	
16+35	1,30	2,80	4,10(1,50-5,20)	4,56	A	8,50	0,90(0,25-1,37)	450	4,15	1,45	3,15	4,60(1,10-7,00)	4,79	A	4,60	0,96(0,21-1,79)	480	4,45	
20+20	2,00	2,00	4,00(1,50-5,00)	4,49	A	8,50	0,89(0,25-1,31)	445	4,10	2,30	2,30	4,60(1,10-7,00)	4,84	A	4,60	0,95(0,21-1,77)	475	4,40	
20+25	1,80	2,30	4,10(1,50-5,20)	4,56	A	8,50	0,90(0,25-1,37)	450	4,15	2,05	2,55	4,60(1,10-7,00)	4,84	A	4,60	0,95(0,21-1,77)	475	4,40	
20+35	1,50	2,60	4,10(1,50-5,20)	4,56	A	8,50	0,90(0,25-1,37)	450	4,15	1,65	2,95	4,60(1,10-7,00)	4,84	A	4,60	0,95(0,21-1,77)	475	4,40	
25+25	2,05	2,05	4,10(1,50-5,20)	4,56	A	8,50	0,90(0,25-1,37)	450	4,15	2,30	2,30	4,60(1,10-7,00)	4,84	A	4,60	0,95(0,21-1,77)	475	4,40	
25+35	1,70	2,40	4,10(1,50-5,20)	4,56	A	8,50	0,90(0,25-1,37)	450	4,15	1,90	2,70	4,60(1,10-7,00)	4,84	A	4,60	0,95(0,21-1,77)	475	4,40	

Free Multi 2x1 CU-2Z50TBE. Minimum capacity connected: 3,20 kW. Maximum capacity connected: 7,70 kW • R32 GAS

Indoor unit capacity	Cooling capacity (kW) Rooms					EER	SEER ¹	Input power rating			Heating capacity (kW) Rooms				COP	SCOP ¹	Input power rating		
	A	B	Total (Min-Max)	W/W	W/W			kW	kWh	230V	A	B	Total (Min-Max)	W/W			W/W	kW	kWh
1 Room																			
16	1,60		1,60(1,10-2,30)	3,90	A		0,41(0,22-0,60)	205	1,95	2,60		2,60(0,70-3,80)	3,77	A		0,69(0,17-1,11)	345	3,20	
20	2,00		2,00(1,10-2,90)	3,85	A		0,52(0,22-0,77)	260	2,45	3,20		3,20(0,70-4,80)	3,76	A		0,85(0,17-1,41)	425	3,95	
25	2,50		2,50(1,10-3,50)	3,73	A		0,67(0,22-1,00)	335	3,15	3,60		3,60(0,70-5,50)	3,50	B		1,03(0,17-1,70)	515	4,75	
35	3,50		3,50(1,10-4,00)	3,47	A		1,01(0,22-1,22)	505	4,70	4,50		4,50(0,70-6,20)	3,60	B		1,25(0,17-1,81)	625	5,80	
42	4,20		4,20(1,10-4,50)	3,09	B		1,36(0,22-1,50)	680	6,35	5,00		5,00(1,10-6,40)	3,23	C		1,55(0,21-2,18)	775	7,15	
50	5,00		5,00(1,20-5,10)	2,96	C		1,69(0,23-1,79)	845	7,80	5,30		5,30(1,10-6,80)	3,23	C		1,64(0,21-2,29)	820	7,60	
2 Rooms																			
16+16	1,60	1,60	3,20(1,50-4,00)	4,71	A	8,50	0,68(0,25-0,99)	340	3,15	2,60	2,60	5,20(1,10-7,00)	4,60	A	4,60	1,13(0,21-1,81)	565	5,10	
16+20	1,60	2,00	3,60(1,50-4,50)	4,62	A	8,50	0,78(0,25-1,15)	390	3,60	2,40	3,00	5,40(1,10-7,00)	4,58	A	4,60	1,18(0,21-1,79)	590	5,35	
16+25	1,60	2,50	4,10(1,50-5,20)	4,56	A	8,50	0,90(0,25-1,37)	450	4,15	2,10	3,30	5,40(1,10-7,00)	4,58	A	4,60	1,18(0,21-1,79)	590	5,35	
16+35	1,55	3,45	5,00(1,50-5,20)	4,24	A	8,50	1,18(0,25-1,37)	590	5,35	1,70	3,70	5,40(1,10-7,00)	4,58	A	4,60	1,18(0,21-1,79)	590	5,35	
16+42	1,40	3,60	5,00(1,50-5,40)	4,24	A	8,50	1,18(0,25-1,49)	590	5,35	1,55	4,05	5,60(1,10-7,20)	4,63	A	4,60	1,21(0,21-1,80)	605	5,50	
16+50	1,20	3,80	5,00(1,50-5,40)	4,24	A	8,50	1,18(0,25-1,49)	590	5,35	1,35	4,25	5,60(1,10-7,20)	4,63	A	4,60	1,21(0,21-1,80)	605	5,50	
20+20	2,00	2,00	4,00(1,50-5,00)	4,49	A	8,50	0,89(0,25-1,31)	445	4,10	2,70	2,70	5,40(1,10-7,00)	4,62	A	4,60	1,17(0,21-1,77)	585	5,30	
20+25	2,00	2,50	4,50(1,50-5,20)	4,37	A	8,50	1,03(0,25-1,37)	515	4,65	2,40	3,00	5,40(1,10-7,00)	4,62	A	4,60	1,17(0,21-1,77)	585	5,30	
20+35	1,80	3,20	5,00(1,50-5,40)	4,24	A	8,50	1,18(0,25-1,49)	590	5,35	2,05	3,55	5,60(1,10-7,20)	4,63	A	4,60	1,21(0,21-1,80)	605	5,50	
20+42	1,60	3,40	5,00(1,50-5,40)	4,24	A	8,50	1,18(0,25-1,49)	590	5,35	1,80	3,80	5,60(1,10-7,20)	4,63	A	4,60	1,21(0,21-1,80)	605	5,50	
20+50	1,45	3,55	5,00(1,50-5,40)	4,24	A	8,50	1,18(0,25-1,49)	590	5,35	1,60	4,00	5,60(1,10-7,20)	4,63	A	4,60	1,21(0,21-1,80)	605	5,50	
25+25	2,50	2,50	5,00(1,50-5,40)	4,24	A	8,50	1,18(0,25-1,49)	590	5,35	2,80	2,80	5,60(1,10-7,20)	4,63	A	4,60	1,21(0,21-1,80)	605	5,50	
25+35	2,10	2,90	5,00(1,50-5,40)	4,24	A	8,50	1,18(0,25-1,49)	590	5,35	2,35	3,25	5,60(1,10-7,20)	4,63	A	4,60	1,21(0,21-1,80)	605	5,50	
25+42	1,85	3,15	5,00(1,50-5,40)	4,24	A	8,50	1,18(0,25-1,49)	590	5,35	2,10	3,50	5,60(1,10-7,20)	4,63	A	4,60	1,21(0,21-1,80)	605	5,50	
25+50	1,65	3,35	5,00(1,50-5,40)	4,24	A	8,50	1,18(0,25-1,49)	590	5,35	1,85	3,75	5,60(1,10-7,20)	4,63	A	4,60	1,21(0,21-1,80)	605	5,50	
35+35	2,50	2,50	5,00(1,50-5,40)	4,24	A	8,50	1,18(0,25-1,49)	590	5,35	2,80	2,80	5,60(1,10-7,20)	4,63	A	4,60	1,21(0,21-1,80)	605	5,50	
35+42	2,25	2,75	5,00(1,50-5,40)	4,24	A	8,50	1,18(0,25-1,49)	590	5,35	2,55	3,05	5,60(1,10-7,20)	4,63	A	4,60	1,21(0,21-1,80)	605	5,50	

¹

Free Multi System Z

R32

Free Multi 3x1 CU-3Z52TBE. Minimum capacity connected: 4,50 kW. Maximum capacity connected: 9,50 kW • R32 GAS

Indoor unit capacity	Cooling capacity (kW) Rooms				EER	SEER ¹	Input power rating	A.E.C.	Current	Heating capacity (kW) Rooms				COP	SCOP ¹	Input power rating	A.E.C.	Current
	A	B	C	Total [Min - Max]						W/W	W/W	kW	kWh					
1 Room																		
16	1,60			1,60 [1,30 - 2,30]	4,00 A		0,40 [0,25 - 0,64]	200	2,00	2,60			2,60 [1,20 - 3,20]	4,33 A		0,60 [0,30 - 0,96]	300	3,00
20	2,00			2,00 [1,80 - 2,90]	4,00 A		0,50 [0,34 - 0,81]	250	2,50	3,20			3,20 [1,20 - 4,10]	4,32 A		0,74 [0,30 - 1,23]	370	3,70
25	2,50			2,50 [1,80 - 2,90]	3,97 A		0,63 [0,34 - 0,81]	315	3,00	3,60			3,60 [1,20 - 4,30]	3,83 A		0,94 [0,30 - 1,23]	470	4,50
35	3,50			3,50 [1,80 - 3,80]	3,72 A		0,94 [0,34 - 1,36]	470	4,30	4,50			4,50 [1,20 - 5,80]	3,66 A		1,23 [0,30 - 2,10]	615	5,80
42	4,20			4,20 [1,80 - 4,30]	3,07 B		1,37 [0,34 - 1,99]	685	6,10	5,60			5,60 [1,20 - 6,80]	3,26 C		1,72 [0,30 - 2,93]	860	7,70
50	5,00			5,00 [1,90 - 5,70]	3,23 A		1,55 [0,34 - 2,13]	775	6,80	6,80			6,80 [1,20 - 6,90]	3,24 C		2,10 [0,30 - 2,52]	1050	9,20
2 Rooms																		
16+16	1,60	1,60		3,20 [1,80 - 6,20]	5,42 A	7,00	0,59 [0,33 - 2,09]	295	2,90	2,60	2,60		5,20 [1,40 - 7,00]	4,13 A	3,80	1,26 [0,34 - 1,99]	630	5,80
16+20	1,60	2,00		3,60 [1,80 - 6,20]	4,93 A	7,00	0,73 [0,33 - 2,05]	365	3,50	2,58	3,22		5,80 [1,40 - 7,00]	4,03 A	3,80	1,44 [0,33 - 1,95]	720	6,60
16+25	1,60	2,50		4,10 [1,80 - 6,20]	4,66 A	7,00	0,88 [0,33 - 2,05]	440	4,10	2,42	3,78		6,20 [1,40 - 7,00]	3,95 A	3,80	1,57 [0,33 - 1,95]	785	7,20
16+35	1,60	3,50		5,10 [1,80 - 6,30]	3,89 A	7,00	1,31 [0,33 - 2,06]	655	6,00	2,13	4,67		6,80 [1,40 - 7,30]	3,89 A	3,80	1,75 [0,29 - 2,05]	875	7,90
16+42	1,43	3,77		5,20 [1,90 - 6,40]	3,85 A	7,00	1,35 [0,35 - 2,10]	675	6,20	1,88	4,92		6,80 [1,40 - 7,30]	3,98 A	3,80	1,71 [0,31 - 2,04]	855	7,80
16+50	1,26	3,94		5,20 [1,90 - 6,80]	4,44 A	7,20	1,17 [0,34 - 2,04]	585	5,40	1,65	5,15		6,80 [1,40 - 8,00]	4,36 A	4,00	1,56 [0,27 - 2,15]	780	7,10
20+20	2,00	2,00		4,00 [1,80 - 6,20]	4,71 A	7,00	0,85 [0,33 - 2,01]	425	4,00	3,20	3,20		6,40 [1,40 - 7,00]	3,93 A	3,80	1,63 [0,32 - 1,95]	815	7,40
20+25	2,00	2,50		4,50 [1,80 - 6,20]	4,33 A	7,00	1,04 [0,33 - 2,01]	520	4,80	3,02	3,78		6,80 [1,40 - 7,00]	3,86 A	3,80	1,76 [0,29 - 1,95]	880	8,00
20+35	1,89	3,31		5,20 [1,80 - 6,30]	3,85 A	7,00	1,35 [0,33 - 2,02]	675	6,20	2,47	4,33		6,80 [1,40 - 7,30]	3,98 A	3,80	1,71 [0,28 - 2,04]	855	7,80
20+42	1,68	3,52		5,20 [1,90 - 6,40]	3,94 A	7,00	1,32 [0,35 - 2,06]	660	6,00	2,19	4,61		6,80 [1,40 - 7,30]	4,00 A	3,80	1,70 [0,30 - 2,00]	850	7,80
20+50	1,49	3,71		5,20 [1,90 - 6,80]	4,44 A	7,20	1,17 [0,34 - 2,04]	585	5,40	1,94	4,86		6,80 [1,40 - 8,00]	4,36 A	4,00	1,56 [0,27 - 2,15]	780	7,10
25+25	2,50	2,50		5,00 [1,80 - 6,20]	3,91 A	7,00	1,28 [0,33 - 2,01]	640	5,80	3,40	3,40		6,80 [1,40 - 7,00]	3,86 A	3,80	1,76 [0,29 - 1,95]	880	8,00
25+35	2,17	3,03		5,20 [1,90 - 6,30]	3,85 A	7,00	1,35 [0,35 - 2,02]	675	6,20	2,83	3,97		6,80 [1,40 - 7,30]	3,98 A	3,80	1,71 [0,28 - 2,04]	855	7,80
25+42	1,94	3,26		5,20 [1,90 - 6,40]	3,94 A	7,00	1,32 [0,35 - 2,06]	660	6,00	2,54	4,26		6,80 [1,40 - 7,30]	4,00 A	3,80	1,70 [0,30 - 2,00]	850	7,80
25+50	1,73	3,47		5,20 [1,90 - 6,80]	4,44 A	7,20	1,17 [0,34 - 2,04]	585	5,40	2,27	4,53		6,80 [1,40 - 8,00]	4,36 A	4,00	1,56 [0,24 - 2,15]	780	7,10
35+35	2,60	2,60		5,20 [1,90 - 6,40]	4,06 A	7,00	1,28 [0,35 - 2,02]	640	5,80	3,40	3,40		6,80 [1,40 - 7,50]	4,02 A	3,80	1,69 [0,27 - 2,06]	845	7,70
35+42	2,36	2,84		5,20 [1,90 - 6,50]	4,06 A	7,00	1,28 [0,35 - 2,07]	640	5,80	3,09	3,71		6,80 [1,40 - 7,50]	4,02 A	3,80	1,69 [0,26 - 2,06]	845	7,70
35+50	2,14	3,06		5,20 [1,90 - 6,90]	4,60 A	7,20	1,13 [0,36 - 2,04]	565	5,20	2,80	4,00		6,80 [1,40 - 8,00]	4,42 A	4,00	1,54 [0,24 - 2,08]	770	7,00
42+42	2,60	2,60		5,20 [1,90 - 6,50]	4,06 A	7,00	1,28 [0,35 - 2,07]	640	5,80	3,40	3,40		6,80 [1,40 - 7,60]	4,12 A	3,80	1,65 [0,26 - 2,09]	825	7,50
42+50	2,37	2,83		5,20 [1,90 - 6,90]	4,60 A	7,20	1,13 [0,36 - 2,04]	565	5,20	3,10	3,70		6,80 [1,40 - 8,00]	4,44 A	4,00	1,53 [0,24 - 2,08]	765	7,00
3 Rooms																		
16+16+16	1,60	1,60	1,60	4,80 [1,80 - 7,20]	5,05 A	8,50	0,95 [0,36 - 2,13]	475	4,40	2,26	2,26	2,26	6,78 [1,50 - 8,10]	4,58 A	4,20	1,48 [0,29 - 2,10]	740	6,80
16+16+20	1,60	1,60	2,00	5,20 [1,80 - 7,30]	4,77 A	8,50	1,09 [0,36 - 2,18]	545	5,00	2,09	2,09	2,62	6,80 [1,60 - 8,30]	4,63 A	4,20	1,47 [0,32 - 2,17]	735	6,70
16+16+25	1,46	1,46	2,28	5,20 [1,90 - 7,20]	4,77 A	8,50	1,09 [0,39 - 2,09]	545	5,00	1,91	1,91	2,98	6,80 [1,60 - 8,30]	4,63 A	4,20	1,47 [0,32 - 2,17]	735	6,70
16+16+35	1,24	1,24	2,72	5,20 [1,90 - 7,20]	4,77 A	8,50	1,09 [0,39 - 2,04]	545	5,00	1,62	1,62	3,56	6,80 [1,60 - 8,30]	4,69 A	4,20	1,45 [0,34 - 2,10]	725	6,60
16+16+42	1,12	1,12	2,96	5,20 [1,80 - 7,30]	4,77 A	8,50	1,09 [0,39 - 2,09]	545	5,00	1,47	1,47	3,86	6,80 [1,60 - 8,30]	4,69 A	4,20	1,45 [0,31 - 2,10]	725	6,60
16+16+50	1,01	1,01	3,18	5,20 [1,80 - 7,30]	5,15 A	8,50	1,01 [0,42 - 1,91]	505	4,70	1,33	1,33	4,14	6,80 [1,60 - 8,30]	5,07 A	4,20	1,34 [0,33 - 1,96]	670	6,10
16+20+20	1,48	1,86	1,86	5,20 [1,90 - 7,20]	4,77 A	8,50	1,09 [0,39 - 2,09]	545	5,00	1,94	2,43	2,43	6,80 [1,60 - 8,30]	4,66 A	4,20	1,46 [0,31 - 2,12]	730	6,70
16+20+25	1,36	1,70	2,14	5,20 [1,90 - 7,20]	4,77 A	8,50	1,09 [0,39 - 2,09]	545	5,00	1,78	2,23	2,79	6,80 [1,60 - 8,30]	4,66 A	4,20	1,46 [0,31 - 2,12]	730	6,70
16+20+35	1,17	1,46	2,57	5,20 [1,90 - 7,20]	4,77 A	8,50	1,09 [0,39 - 2,00]	545	5,00	1,53	1,92	3,35	6,80 [1,60 - 8,30]	4,69 A	4,20	1,45 [0,34 - 2,10]	725	6,60
16+20+42	1,07	1,33	2,80	5,20 [1,80 - 7,30]	4,77 A	8,50	1,09 [0,39 - 2,09]	545	5,00	1,39	1,74	3,67	6,80 [1,60 - 8,30]	4,72 A	4,20	1,44 [0,31 - 2,09]	720	6,60
16+20+50	0,97	1,21	3,02	5,20 [1,80 - 7,30]	5,15 A	8,50	1,01 [0,42 - 1,86]	505	4,70	1,27	1,58	3,95	6,80 [1,60 - 8,30]	5,11 A	4,20	1,33 [0,34 - 1,95]	665	6,10
16+25+25	1,26	1,97	1,97	5,20 [1,90 - 7,20]	4,77 A	8,50	1,09 [0,39 - 2,09]	545	5,00	1,64	2,58	2,58	6,80 [1,60 - 8,30]	4,66 A	4,20	1,46 [0,31 - 2,12]	730	6,70
16+25+35	1,09	1,71	2,40	5,20 [1,80 - 7,30]	4,77 A	8,50	1,09 [0,39 - 2,09]	545	5,00	1,43	2,24	3,13	6,80 [1,60 - 8,30]	4,69 A	4,20	1,45 [0,34 - 2,10]	725	6,60
16+25+42	1,00	1,57	2,63	5,20 [1,80 - 7,30]	4,77 A	8,50	1,09 [0,39 - 2,09]	545	5,00	1,31	2,05	3,44	6,80 [1,60 - 8,30]	4,72 A	4,20	1,44 [0,31 - 2,09]	720	6,60
16+25+50	0,91	1,43	2,86	5,20 [1,80 - 7,30]	5,15 A	8,50	1,01 [0,42 - 1,86]	505	4,70	1,19	1,87	3,74	6,80 [1,60 - 8,30]	5,11 A	4,20	1,33 [0,34 - 1,95]	665	6,10
16+35+35	0,96	2,12	2,12	5,20 [1,80 - 7,30]	4,95 A	8,50	1,05 [0,39 - 2,04]	525	4,80	1,26	2,77	2,77	6,80 [1,60 - 8,30]	4,76 A	4,20	1,43 [0,32 - 2,07]	715	6,50
16+35+42	0,89	1,96	2,35	5,20 [1,80 - 7,30]	4,95 A	8,50	1,05 [0,39 - 2,04]	525	4,80	1,17	2,56	3,07	6,80 [1,60 - 8,30]	4,79 A	4,20	1,42 [0,32 - 2,06]	710	6,50
20+20+20	1,73	1,73	1,73	5,19 [1,90 - 7,20]	4,76 A	8,50	1,09 [0,39 - 2,04]	545	5,00	2,26	2,26	2,26	6,78 [1,60 - 8,30]	4,64 A	4,20	1,46 [0,31 - 2,11]	730	6,70
20+20+25	1,60	1,60	2,00	5,20 [1,90 - 7,20]	4,77 A	8,50	1,09 [0,39 - 2,04]	545	5,00	2,09	2,09	2,62	6,80 [1,60 - 8,30]	4,66 A	4,20	1,46 [0,31 - 2,11]	730	6,70
20+20+35	1,39	1,39	2,42	5,20 [1,90 - 7,20]	4,95 A	8,50	1,05 [0,39 - 2,00]	525	4,80	1,81	1,81	3,18	6,80 [1,60 - 8,30]	4,72 A	4,20	1,44 [0,34 - 2,09]	720	6,60
20+20+42	1,27	1,27	2,66	5,20 [1,80 - 7,30]	4,95 A	8,50	1,05 [0,39 - 2,04]	525	4,80	1,66	1,66	3,48	6,80 [1,60 - 8,30]	4,76 A	4,20	1,43 [0,32 - 2,08]	715	6,50
20+20+50	1,16	1,16	2,88	5,20 [1,80 - 7,30]	5,15 A	8,50	1,01 [0,42 - 1,86]	505	4,70	1,51	1,51	3,78	6,80 [1,60 - 8,30]	5,11 A	4,20	1,33 [0,34 - 1,94]	665	6,10
20+25+25	1,48	1,86	1,86	5,20 [1,90 - 7,20]	4,77 A	8,50	1,09 [0,39 - 2,04]	545	5,00	1,94	2,43	2,43	6,80 [1,60 - 8,30]	4,66 A	4,20	1,46 [0,31 - 2,11]	730	6,70
20+25+35	1,29	1,63	2,28	5,20 [1,90 - 7,20]	4,95 A	8,50	1,05 [0,39 - 2,00]	525	4,80	1,69	2,13	2,98	6,80 [1,60 - 8,30]	4,72 A	4,20	1,44 [0,34 - 2,09]		

FREE MULTI R32 COMBINATIONS TABLE

Free Multi 3x1 CU-3Z68TBE. Minimum capacity connected: 4,50 kW. Maximum capacity connected: 11,20 kW • R32 GAS

Indoor unit capacity	Cooling capacity (kW) Rooms				EER	SEER ¹	Input power rating kW	A.E.C. kWh	Current 230V	Heating capacity (kW) Rooms				COP	SCOP ¹	Input power rating kW	A.E.C. kWh	Current 230V
	A	B	C	Total (Min- Max)						W/W	W/W	A	B					
1 Room																		
16	1,60			1,60(1,30-2,30)	4,00 A		0,40(0,25-0,64)	200	2,00	2,60			2,60(1,20-3,20)	4,33 A		0,60(0,30-0,96)	300	3,00
20	2,00			2,00(1,80-2,90)	4,00 A		0,50(0,34-0,81)	250	2,50	3,20			3,20(1,20-4,10)	4,32 A		0,74(0,30-1,23)	370	3,70
25	2,50			2,50(1,80-2,90)	3,97 A		0,63(0,34-0,81)	315	3,20	3,60			3,60(1,20-4,30)	3,83 A		0,94(0,30-1,23)	470	4,70
35	3,50			3,50(1,80-3,80)	3,72 A		0,94(0,34-1,36)	470	4,50	4,50			4,50(1,20-5,80)	3,66 A		1,23(0,30-2,10)	615	6,00
42	4,20			4,20(1,80-4,30)	3,07 B		1,37(0,34-1,99)	685	6,40	5,60			5,60(1,20-6,80)	3,26 C		1,72(0,30-2,93)	860	8,00
50	5,00			5,00(1,90-5,70)	3,23 A		1,55(0,34-2,13)	775	7,20	6,80			6,80(1,20-6,90)	3,24 C		2,10(0,30-2,52)	1050	9,70
60	6,00			6,00(1,90-6,20)	2,96 C		2,03(0,34-2,33)	1015	9,20	8,50			8,50(1,30-9,00)	3,54 B		2,40(0,62-2,55)	1200	11,10
2 Rooms																		
16+16	1,60	1,60		3,20(1,90-6,40)	5,71 A	6,10	0,56(0,27-2,12)	280	2,80	2,60	2,60	5,20(2,70-9,80)	4,00 A	3,80	1,30(0,66-3,01)	650	5,90	
16+20	1,60	2,00		3,60(1,90-6,40)	5,22 A	6,10	0,69(0,27-2,08)	345	3,40	2,58	3,20	5,80(2,70-9,80)	3,92 A	3,80	1,48(0,65-3,02)	740	6,80	
16+25	1,60	2,50		4,10(1,90-6,40)	4,94 A	6,10	0,83(0,27-2,08)	415	3,90	2,42	3,78	6,20(2,70-9,80)	3,85 A	3,80	1,61(0,65-3,02)	805	7,40	
16+35	1,60	3,50		5,10(1,90-6,90)	4,08 A	6,10	1,25(0,27-2,48)	625	5,70	2,23	4,87	7,10(2,70-9,90)	3,76 A	3,80	1,90(0,63-3,02)	950	8,60	
16+42	1,60	4,20		5,80(1,90-6,90)	3,60 A	6,10	1,61(0,27-2,44)	805	7,40	2,26	5,94	8,20(2,70-9,90)	3,52 B	3,80	2,33(0,63-3,02)	1165	10,50	
16+50	1,60	5,00		6,60(2,00-7,50)	3,63 A	6,50	1,82(0,28-2,52)	910	8,20	2,06	6,44	8,50(2,80-10,20)	3,76 A	3,80	2,26(0,56-2,99)	1130	10,20	
16+60	1,43	5,37		6,80(2,00-7,50)	3,49 A	6,50	1,95(0,28-2,52)	975	8,80	1,79	6,71	8,50(2,80-10,20)	3,76 A	3,80	2,26(0,56-2,99)	1130	10,20	
20+20	2,00	2,00		4,00(1,90-6,40)	5,00 A	6,10	0,80(0,27-2,04)	400	3,80	3,20	3,20	6,40(2,70-9,80)	3,83 A	3,80	1,67(0,64-3,02)	835	7,60	
20+25	2,00	2,50		4,50(1,90-6,40)	4,59 A	6,10	0,98(0,27-2,04)	490	4,60	3,02	3,78	6,80(2,70-9,80)	3,78 A	3,80	1,80(0,64-3,02)	900	8,10	
20+35	2,00	3,50		5,50(1,90-6,90)	3,85 A	6,10	1,43(0,27-2,44)	715	6,50	2,80	4,90	7,70(2,70-9,90)	3,65 A	3,80	2,11(0,63-3,02)	1055	9,50	
20+42	2,00	4,20		6,20(1,90-6,90)	3,35 A	6,10	1,85(0,27-2,40)	925	8,40	2,74	5,76	8,50(2,70-9,90)	3,48 B	3,80	2,44(0,62-3,03)	1220	11,00	
20+50	1,94	4,86		6,80(2,00-7,50)	3,49 A	6,50	1,95(0,28-2,48)	975	8,80	2,43	6,07	8,50(2,80-10,20)	3,76 A	3,80	2,26(0,56-2,99)	1130	10,20	
20+60	1,70	5,10		6,80(2,00-7,50)	3,49 A	6,50	1,95(0,28-2,48)	975	8,80	2,12	6,38	8,50(2,80-10,20)	3,76 A	3,80	2,26(0,56-2,99)	1130	10,20	
25+25	2,50	2,50		5,00(1,90-6,80)	4,13 A	6,10	1,21(0,27-2,43)	605	5,60	3,60	3,60	7,20(2,70-9,80)	3,71 A	3,80	1,94(0,64-3,02)	970	8,80	
25+35	2,50	3,50		6,00(1,90-6,90)	3,47 A	6,10	1,73(0,27-2,44)	865	7,90	3,37	4,73	8,10(2,70-9,90)	3,60 B	3,80	2,25(0,63-3,02)	1125	10,20	
25+42	2,50	4,20		6,70(1,90-6,90)	2,94 C	6,10	2,28(0,27-2,40)	1140	10,30	3,17	5,33	8,50(2,70-9,90)	3,48 B	3,80	2,44(0,62-3,03)	1220	11,00	
25+50	2,27	4,53		6,80(1,90-7,50)	3,49 A	6,50	1,95(0,26-2,48)	975	8,80	2,83	5,67	8,50(2,80-10,20)	3,76 A	3,80	2,26(0,56-2,99)	1130	10,20	
25+60	2,00	4,80		6,80(1,90-7,50)	3,49 A	6,50	1,95(0,26-2,48)	975	8,80	2,50	6,00	8,50(2,80-10,20)	3,76 A	3,80	2,26(0,56-2,99)	1130	10,20	
35+35	3,40	3,40		6,80(1,90-7,00)	2,97 C	6,10	2,29(0,27-2,40)	1145	10,40	4,25	4,25	8,50(2,80-10,00)	3,56 B	3,80	2,39(0,64-3,02)	1195	10,80	
35+42	3,09	3,71		6,80(1,90-7,10)	3,04 B	6,10	2,24(0,27-2,50)	1120	10,10	3,86	4,64	8,50(2,80-10,00)	3,56 B	3,80	2,39(0,64-3,02)	1195	10,80	
35+50	2,80	4,00		6,80(2,00-7,60)	3,64 A	6,50	1,87(0,28-2,48)	935	8,50	3,50	5,00	8,50(2,80-10,30)	3,86 A	3,80	2,20(0,54-2,97)	1100	10,00	
35+60	2,51	4,29		6,80(2,00-7,60)	3,64 A	6,50	1,87(0,28-2,48)	935	8,50	3,13	5,37	8,50(2,80-10,30)	3,86 A	3,80	2,20(0,54-2,97)	1100	10,00	
42+42	3,40	3,40		6,80(1,90-7,10)	3,02 B	6,10	2,25(0,26-2,45)	1125	10,20	4,25	4,25	8,50(2,80-10,00)	3,57 B	3,80	2,38(0,60-2,98)	1190	10,80	
42+50	3,10	3,70		6,80(2,00-7,60)	3,64 A	6,50	1,87(0,28-2,44)	935	8,50	3,88	4,62	8,50(2,80-10,30)	3,88 A	3,80	2,19(0,54-2,96)	1095	9,90	
42+60	2,80	4,00		6,80(2,00-7,60)	3,64 A	6,50	1,87(0,28-2,44)	935	8,50	3,50	5,00	8,50(2,80-10,30)	3,88 A	3,80	2,19(0,54-2,96)	1095	9,90	
50+50	3,40	3,40		6,80(2,10-8,10)	4,10 A	6,50	1,66(0,32-2,50)	830	7,60	4,25	4,25	8,50(2,80-10,50)	4,15 A	3,80	2,05(0,51-2,87)	1025	9,30	
50+60	3,09	3,71		6,80(2,10-8,10)	4,10 A	6,50	1,66(0,32-2,50)	830	7,60	3,86	4,64	8,50(2,80-10,50)	4,15 A	3,80	2,05(0,51-2,87)	1025	9,30	
3 Rooms																		
16+16+16	1,60	1,60	1,60	4,80(1,90-8,00)	4,85 A	8,00	0,99(0,27-2,50)	495	4,60	2,60	2,60	7,80(3,30-10,40)	3,98 A	4,20	1,96(0,64-2,95)	980	8,90	
16+16+20	1,60	1,60	2,00	5,20(1,90-8,00)	4,60 A	8,00	1,13(0,27-2,46)	565	5,20	2,58	2,58	8,40(3,30-10,40)	3,84 A	4,20	2,19(0,64-2,94)	1095	9,90	
16+16+25	1,60	1,60	2,50	5,70(1,90-8,00)	4,19 A	8,00	1,36(0,27-2,46)	680	6,20	2,39	2,39	8,50(3,30-10,40)	3,81 A	4,20	2,23(0,64-2,94)	1115	10,10	
16+16+35	1,60	1,60	3,50	6,70(1,90-8,00)	3,68 A	8,00	1,82(0,27-2,37)	910	8,20	2,03	2,03	9,44(3,30-10,40)	3,94 A	4,20	2,16(0,63-2,92)	1080	9,80	
16+16+42	1,47	1,47	3,86	6,80(1,90-8,10)	3,66 A	8,00	1,86(0,27-2,46)	930	8,40	1,84	1,84	9,42(3,30-10,50)	3,95 A	4,20	2,15(0,62-2,95)	1075	9,70	
16+16+50	1,33	1,33	4,14	6,80(2,00-8,50)	3,93 A	8,00	1,73(0,32-2,42)	865	7,90	1,66	1,66	9,18(3,20-10,60)	4,21 A	4,20	2,02(0,60-2,80)	1010	9,10	
16+16+60	1,18	1,18	4,44	6,80(2,00-8,50)	3,93 A	8,00	1,73(0,32-2,42)	865	7,90	1,48	1,48	9,54(3,20-10,60)	4,21 A	4,20	2,02(0,60-2,80)	1010	9,10	
16+20+20	1,60	2,00	2,00	5,60(1,90-8,00)	4,38 A	8,00	1,28(0,27-2,46)	640	5,80	2,42	3,04	8,50(3,30-10,40)	3,83 A	4,20	2,22(0,63-2,93)	1110	10,00	
16+20+25	1,60	2,00	2,50	6,10(1,90-8,00)	4,01 A	8,00	1,52(0,27-2,46)	760	6,90	2,23	2,79	9,48(3,30-10,40)	3,83 A	4,20	2,22(0,63-2,93)	1110	10,00	
16+20+35	1,53	1,92	3,35	6,80(1,90-8,00)	3,66 A	8,00	1,86(0,27-2,37)	930	8,40	1,92	2,39	9,19(3,30-10,40)	3,95 A	4,20	2,15(0,62-2,86)	1075	9,70	
16+20+42	1,39	1,74	3,67	6,80(1,90-8,10)	3,66 A	8,00	1,86(0,27-2,42)	930	8,40	1,74	2,18	9,58(3,30-10,50)	3,95 A	4,20	2,15(0,62-2,90)	1075	9,70	
16+20+50	1,27	1,58	3,95	6,80(2,00-8,50)	4,05 A	8,00	1,68(0,32-2,42)	840	7,70	1,58	1,98	9,49(3,20-10,60)	4,23 A	4,20	2,01(0,60-2,79)	1005	9,10	
16+20+60	1,13	1,42	4,25	6,80(2,00-8,50)	4,05 A	8,00	1,68(0,32-2,42)	840	7,70	1,42	1,77	9,51(3,20-10,60)	4,23 A	4,20	2,01(0,60-2,79)	1005	9,10	
16+25+25	1,60	2,50	2,50	6,60(1,90-8,00)	3,73 A	8,00	1,77(0,27-2,46)	885	8,00	2,06	3,22	9,22(3,30-10,40)	3,83 A	4,20	2,22(0,63-2,93)	1110	10,00	
16+25+35	1,43	2,24	3,13	6,80(1,90-8,00)	3,66 A	8,00	1,86(0,27-2,37)	930	8,40	1,79	2,80	9,91(3,30-10,40)	3,95 A	4,20	2,15(0,62-2,86)	1075	9,70	
16+25+42	1,31	2,05	3,44	6,80(1,90-8,10)	3,66 A	8,00	1,86(0,27-2,42)	930	8,40	1,64	2,56	9,30(3,30-10,50)	3,95 A	4,20	2,15(0,62-2,90)	1075	9,70	
16+25+50	1,19	1,87	3,74	6,80(2,00-8,50)	4,05 A	8,00	1,68(0,32-2,42)	840	7,70	1,49	2,34	9,67(3,20-10,60)	4,23 A	4,20	2,01(0,60-2,79)	1005	9,10	
16+25+60	1,08	1,68	4,04	6,80(2,00-8,50)	4,05 A	8,00	1,68(0,32-2,42)	840	7,70	1,35	2,10	9,05(3,20-10,60)	4,23 A	4,20	2,01(0,60-2,79)	1005	9,10	
16+35+35	1,26	2,77																

Free Multi System Z

R32

Free Multi 3x1 CU-3Z68TBE. Minimum capacity connected: 4,50 kW. Maximum capacity connected: 11,20 kW • R32 GAS

Indoor unit capacity	Cooling capacity (kW) Rooms				EER	SEER ¹	Input power rating kW	A.E.C. kWh	Current 230V	Heating capacity (kW) Rooms				COP	SCOP ¹	Input power rating kW	A.E.C. kWh	Current 230V
	A	B	C	Total [Min - Max]						W/W	W/W	A	B					
25+25+25	2,26	2,26	2,26	6,78 [1,90-8,00]	3,65 A	8,00	1,86 [0,27-2,41]	930	8,40	2,83	2,83	2,83	8,49 [3,30-10,40]	3,91 A	4,20	2,17 [0,63-2,92]	1085	9,80
25+25+35	2,00	2,00	2,80	6,80 [1,90-8,00]	3,66 A	8,00	1,86 [0,27-2,32]	930	8,40	2,50	2,50	3,50	8,50 [3,30-10,40]	3,95 A	4,20	2,15 [0,62-2,85]	1075	9,70
25+25+42	1,85	1,85	3,10	6,80 [1,90-8,10]	3,74 A	8,00	1,82 [0,29-2,42]	910	8,20	2,31	2,31	3,88	8,50 [3,30-10,50]	3,97 A	4,20	2,14 [0,62-2,89]	1070	9,70
25+25+50	1,70	1,70	3,40	6,80 [2,00-8,50]	4,05 A	8,00	1,68 [0,34-2,38]	840	7,70	2,13	2,13	4,24	8,50 [3,20-10,60]	4,25 A	4,20	2,00 [0,60-2,78]	1000	9,00
25+25+60	1,55	1,55	3,70	6,80 [2,00-8,50]	4,05 A	8,00	1,68 [0,34-2,38]	840	7,70	1,93	1,93	4,64	8,50 [3,20-10,60]	4,25 A	4,20	2,00 [0,60-2,78]	1000	9,00
25+35+35	1,78	2,51	2,51	6,80 [1,90-8,10]	3,74 A	8,00	1,82 [0,29-2,33]	910	8,20	2,24	3,13	3,13	8,50 [3,30-10,50]	4,01 A	4,20	2,12 [0,64-2,87]	1060	9,60
25+35+42	1,67	2,33	2,80	6,80 [1,90-8,20]	3,74 A	8,00	1,82 [0,29-2,42]	910	8,20	2,08	2,92	3,50	8,50 [3,30-10,50]	4,03 A	4,20	2,11 [0,64-2,86]	1055	9,50
25+35+50	1,55	2,16	3,09	6,80 [2,00-8,50]	4,05 A	8,00	1,68 [0,34-2,33]	840	7,70	1,93	2,70	3,87	8,50 [3,20-10,60]	4,29 A	4,20	1,98 [0,60-2,76]	990	9,00
25+42+42	1,56	2,62	2,62	6,80 [1,90-8,20]	3,84 A	8,00	1,77 [0,29-2,37]	885	8,00	1,94	3,28	3,28	8,50 [3,30-10,50]	4,05 A	4,20	2,10 [0,63-2,86]	1050	9,50
35+35+35	2,26	2,26	2,26	6,78 [1,90-8,20]	3,83 A	8,00	1,77 [0,29-2,33]	885	8,00	2,83	2,83	2,83	8,49 [3,30-10,50]	4,12 A	4,20	2,06 [0,63-2,85]	1030	9,30
35+35+42	2,13	2,13	2,54	6,80 [1,90-8,20]	3,84 A	8,00	1,77 [0,29-2,33]	885	8,00	2,66	2,66	3,18	8,50 [3,30-10,50]	4,15 A	4,20	2,05 [0,63-2,80]	1025	9,30

1) Energy Label Scale from A+++ to D.

Free Multi 4x1 CU-4Z68TBE. Minimum capacity connected: 4,50 kW. Maximum capacity connected: 11,50 kW • R32 GAS

Indoor unit capacity	Cooling capacity (kW) Rooms					EER	SEER ¹	Input power rating kW	A.E.C. kWh	Current 230V	Heating capacity (kW) Rooms					COP	SCOP ¹	Input power rating kW	A.E.C. kWh	Current 230V
	A	B	C	D	Total [Min - Max]						W/W	W/W	A	B	C					
1 Room																				
16	1,60				1,60 [1,30-2,30]	4,00 A	6,10	0,40 [0,25-0,64]	200	2,00	2,60				2,60 [1,20-3,20]	4,33 A	3,80	0,60 [0,30-0,96]	300	3,00
20	2,00				2,00 [1,80-2,90]	4,00 A	6,10	0,50 [0,34-0,81]	250	2,50	3,20				3,20 [1,20-4,10]	4,32 A	3,80	0,74 [0,30-1,23]	370	3,70
25	2,50				2,50 [1,80-2,90]	3,97 A	6,10	0,63 [0,34-0,81]	315	3,20	3,60				3,60 [1,20-4,30]	3,83 A	3,80	0,94 [0,30-1,23]	470	4,70
35	3,50				3,50 [1,80-3,80]	3,72 A	6,10	0,94 [0,34-1,36]	470	4,50	4,50				4,50 [1,20-5,80]	3,66 A	3,80	1,23 [0,30-2,10]	615	6,00
42	4,20				4,20 [1,80-4,30]	3,07 B	6,10	1,37 [0,34-1,99]	685	6,40	5,60				5,60 [1,20-6,80]	3,26 C	3,80	1,72 [0,30-2,93]	860	8,00
50	5,00				5,00 [1,90-5,70]	3,23 A	6,10	1,55 [0,34-2,13]	775	7,20	6,80				6,80 [1,20-6,90]	3,24 C	3,80	2,10 [0,30-2,52]	1050	9,70
60	6,00				6,00 [1,90-6,20]	2,96 C	6,10	2,03 [0,34-2,33]	1015	9,20	8,50				8,50 [1,30-9,00]	3,54 B	3,80	2,40 [0,62-2,55]	1200	11,10
2 Rooms																				
16+16	1,60	1,60			3,20 [1,90-6,40]	5,71 A	6,10	0,56 [0,27-2,12]	280	2,80	2,60	2,60			5,20 [2,70-9,80]	4,00 A	3,80	1,30 [0,66-3,01]	650	5,90
16+20	1,60	2,00			3,60 [1,90-6,40]	5,22 A	6,10	0,69 [0,27-2,08]	345	3,40	2,58	3,22			5,80 [2,70-9,80]	3,92 A	3,80	1,48 [0,65-3,02]	740	6,80
16+25	1,60	2,50			4,10 [1,90-6,40]	4,94 A	6,10	0,83 [0,27-2,08]	415	3,90	2,42	3,78			6,20 [2,70-9,80]	3,85 A	3,80	1,61 [0,65-3,02]	805	7,40
16+35	1,60	3,50			5,10 [1,90-6,90]	4,08 A	6,10	1,25 [0,27-2,48]	625	5,70	2,23	4,87			7,10 [2,70-9,90]	3,74 A	3,80	1,90 [0,63-3,02]	950	8,60
16+42	1,60	4,20			5,80 [1,90-6,90]	3,60 A	6,10	1,61 [0,27-2,44]	805	7,40	2,26	5,94			8,20 [2,70-9,90]	3,52 B	3,80	2,33 [0,63-3,02]	1165	10,50
16+50	1,60	5,00			6,60 [2,00-7,50]	3,63 A	6,50	1,82 [0,28-2,52]	910	8,20	2,06	6,44			8,50 [2,80-10,20]	3,76 A	3,80	2,26 [0,56-2,99]	1130	10,20
16+60	1,43	5,37			6,80 [2,00-7,50]	3,49 A	6,50	1,95 [0,28-2,52]	975	8,80	1,79	6,71			8,50 [2,80-10,20]	3,76 A	3,80	2,26 [0,56-2,99]	1130	10,20
20+20	2,00	2,00			4,00 [1,90-6,40]	5,00 A	6,10	0,80 [0,27-2,04]	400	3,80	3,20	3,20			6,40 [2,70-9,80]	3,83 A	3,80	1,67 [0,64-3,02]	835	7,60
20+25	2,00	2,50			4,50 [1,90-6,40]	4,59 A	6,10	0,98 [0,27-2,04]	490	4,60	3,02	3,78			6,80 [2,70-9,80]	3,78 A	3,80	1,80 [0,64-3,02]	900	8,10
20+35	2,00	3,50			5,50 [1,90-6,90]	3,85 A	6,10	1,43 [0,27-2,44]	715	6,50	2,80	4,90			7,70 [2,70-9,90]	3,65 A	3,80	2,11 [0,63-3,02]	1055	9,50
20+42	2,00	4,20			6,20 [1,90-6,90]	3,35 A	6,10	1,85 [0,27-2,40]	925	8,40	2,74	5,76			8,50 [2,70-9,90]	3,48 B	3,80	2,44 [0,62-3,03]	1220	11,00
20+50	1,94	4,86			6,80 [2,00-7,50]	3,49 A	6,50	1,95 [0,28-2,48]	975	8,80	2,43	6,07			8,50 [2,80-10,20]	3,76 A	3,80	2,26 [0,56-2,99]	1130	10,20
20+60	1,70	5,10			6,80 [2,00-7,50]	3,49 A	6,50	1,95 [0,28-2,48]	975	8,80	2,12	6,38			8,50 [2,80-10,20]	3,76 A	3,80	2,26 [0,56-2,99]	1130	10,20
25+25	2,50	2,50			5,00 [1,90-6,80]	4,13 A	6,10	1,21 [0,27-2,43]	605	5,60	3,60	3,60			7,20 [2,70-9,80]	3,71 A	3,80	1,94 [0,64-3,02]	970	8,80
25+35	2,50	3,50			6,00 [1,90-6,90]	3,47 A	6,10	1,73 [0,27-2,44]	865	7,90	3,37	4,73			8,10 [2,70-9,90]	3,60 B	3,80	2,25 [0,63-3,02]	1125	10,20
25+42	2,50	4,20			6,70 [1,90-6,90]	2,94 C	6,10	2,28 [0,27-2,40]	1140	10,30	3,17	5,33			8,50 [2,70-9,90]	3,48 B	3,80	2,44 [0,62-3,03]	1220	11,00
25+50	2,27	4,53			6,80 [1,90-7,50]	3,49 A	6,50	1,95 [0,26-2,48]	975	8,80	2,83	5,67			8,50 [2,80-10,20]	3,76 A	3,80	2,26 [0,56-2,99]	1130	10,20
25+60	2,00	4,80			6,80 [1,90-7,50]	3,49 A	6,50	1,95 [0,26-2,48]	975	8,80	2,50	6,00			8,50 [2,80-10,20]	3,76 A	3,80	2,26 [0,56-2,99]	1130	10,20
35+35	3,40	3,40			6,80 [1,90-7,00]	2,97 C	6,10	2,29 [0,27-2,40]	1145	10,40	4,25	4,25			8,50 [2,80-10,00]	3,56 B	3,80	2,39 [0,64-3,02]	1195	10,80
35+42	3,09	3,71			6,80 [1,90-7,10]	3,04 B	6,10	2,24 [0,27-2,50]	1120	10,10	3,86	4,64			8,50 [2,80-10,00]	3,56 B	3,80	2,39 [0,60-3,02]	1195	10,80
35+50	2,80	4,00			6,80 [2,00-7,60]	3,64 A	6,50	1,87 [0,28-2,48]	935	8,50	3,50	5,00			8,50 [2,80-10,30]	3,86 A	3,80	2,20 [0,54-2,97]	1100	10,00
35+60	2,51	4,29			6,80 [2,00-7,60]	3,64 A	6,50	1,87 [0,28-2,48]	935	8,50	3,13	5,37			8,50 [2,80-10,30]	3,86 A	3,80	2,20 [0,54-2,97]	1100	10,00
42+42	3,40	3,40			6,80 [1,90-7,10]	3,02 B	6,10	2,25 [0,26-2,45]	1125	10,20	4,25	4,25			8,50 [2,80-10,00]	3,57 B	3,80	2,38 [0,60-2,98]	1190	10,80
42+50	3,10	3,70			6,80 [2,00-7,60]	3,64 A	6,50	1,87 [0,28-2,44]	935	8,50	3,88	4,42			8,50 [2,80-10,30]	3,88 A	3,80	2,19 [0,54-2,96]	1095	9,90
42+60	2,80	4,00			6,80 [2,00-7,60]	3,64 A	6,50	1,87 [0,28-2,44]	935	8,50	3,50	5,00			8,50 [2,80-10,30]	3,88 A	3,80	2,19 [0,54-2,96]	1095	9,90
50+50	3,40	3,40			6,80 [2,10-8,10]	4,10 A	6,50	1,66 [0,32-2,50]	830	7,60	4,25	4,25			8,50 [2,80-10,50]	4,15 A	3,80	2,05 [0,51-2,87]	1025	9,30
50+60	3,09	3,71			6,80 [2,10-8,10]	4,10 A	6,50	1,66 [0,32-2,50]	830	7,60	3,86	4,64			8,50 [2,80-10,50]	4,15 A	3,80	2,05 [0,51-2,87]	1025	9,30
3 Rooms																				
16+16+16	1,60	1,60	1,60		4,80 [1,90-8,00]	4,85 A	8,00	0,99 [0,27-2,50]	495	4,60	2,60	2,60	2,60		7,80 [3,30-10,40]	3,98 A	4,00	1,96 [0,64-2,95]	980	8,90
16+16+20	1,60	1,60	2,00		5,20 [1,90-8,00]	4,60 A	8,00	1,13 [0,27-2,46]	565	5,20	2,58	2,58	3,24		8,40 [3,30-10,40]	3,84 A	4,00	2,19 [0,64-2,94]	1095	9,90
16+16+25	1,60	1,60	2,50		5,70 [1,90-8,00]	4,19 A	8,00	1												

FREE MULTI R32 COMBINATIONS TABLE

Free Multi 4x1 CU-4Z80TBE. Minimum capacity connected: 4,50 kW. Maximum capacity connected: 14,70 kW • R32 GAS

Table with columns: Indoor unit capacity, Cooling capacity (kW) Rooms, EER, SEER, Input power rating, A.E.C., Current, Heating capacity (kW) Rooms, COP, SCOP, Input power rating, A.E.C., Current. Rows list various unit combinations like 16+25+25, 16+25+35, etc.

FREE MULTI R32 COMBINATIONS TABLE

Free Multi 5x1 CU-5Z90TBE. Minimum capacity connected: 4,50 kW. Maximum capacity connected: 18,30 kW • R32 GAS

Table with columns: Indoor unit capacity, Cooling capacity (kW) Rooms, EER, SEER1, Input power rating, A.E.C., Current, Heating capacity (kW) Rooms, COP, SCOP1, Input power rating, A.E.C., Current. The table lists various combinations of indoor units and their performance metrics.

Free Multi System Z

R32

Free Multi 5x1 CU-5Z90TBE. Minimum capacity connected: 4,50 kW. Maximum capacity connected: 18,30 kW • R32 GAS

Table with columns for Indoor unit capacity, Cooling capacity (kW) Rooms, EER, SEER', Input power rating, A.E.C., Current, Heating capacity (kW) Rooms, COP, SCOP', Input power rating, A.E.C., Current. Rows include configurations like 50+60+71, 60+60+60, 4 Rooms, and many combinations of 16+ units.

Rating Conditions: Cooling Indoor 27 °C DB / 19 °C WB, Cooling Outdoor 35 °C DB / 24 °C WB, Heating Indoor 20 °C DB, Heating Outdoor 7 °C DB / 4 °C WB, (DB: Dry Bulb; WB: Wet Bulb)

Specifications subject to change without notice. For detailed information about ErP / Energy Labelling, please visit our websites www.aircan.panasonic.eu or www.ptc.panasonic.eu.

Free Multi 5x1 CU-5Z90TBE. Minimum capacity connected: 4,50 kW. Maximum capacity connected: 18,30 kW • R32 GAS

Table with columns: Indoor unit capacity, Cooling capacity (kW) Rooms, EER, SEER', Input power rating, A.E.C., Current, Heating capacity (kW) Rooms, COP, SCOP', Input power rating, A.E.C., Current. Rows list various configurations from 20+35+35+35 to 42+42+42+50.

Rating Conditions: Cooling Indoor 27 °C DB / 19 °C WB, Cooling Outdoor 35 °C DB / 24 °C WB, Heating Indoor 20 °C DB, Heating Outdoor 7 °C DB / 4 °C WB. (DB: Dry Bulb; WB: Wet Bulb) Specifications subject to change without notice. For detailed information about ErP / Energy Labelling, please visit our websites www.aircon.panasonic.eu or www.ptc.panasonic.eu.

FREE MULTI R32 COMBINATIONS TABLE

Free Multi 5x1 CU-5Z90TBE. Minimum capacity connected: 4,50 kW. Maximum capacity connected: 18,30 kW • R32 GAS

Table with columns: Indoor unit capacity, Cooling capacity(kW) Rooms, EER, SEER¹, Input power rating, A.E.C., Current, Heating capacity(kW) Rooms, COP, SCOP¹, Input power rating, A.E.C., Current. Rows include various combinations of indoor units (e.g., 16+16+16+16+16, 16+16+16+16+25, etc.) and their corresponding performance metrics.

FREE MULTI R32 COMBINATIONS TABLE

Free Multi 5x1 CU-5Z90TBE. Minimum capacity connected: 4,50 kW. Maximum capacity connected: 18,30 kW • R32 GAS

Table with columns for Indoor unit capacity, Cooling capacity (kW) Rooms, EER, SEER, Input power rating, A.E.C. Current, Heating capacity (kW) Rooms, COP, SCOP, and Input power rating A.E.C. Current. It lists various indoor unit combinations and their corresponding performance metrics.

Free Multi 5x1 CU-5Z90TBE. Minimum capacity connected: 4,50 kW. Maximum capacity connected: 18,30 kW • R32 GAS

Table with columns for Indoor unit capacity, Cooling capacity (kW) Rooms, EER, SEER', Input power rating, A.E.C., Current, Heating capacity (kW) Rooms, COP, SCOP', and Input power rating. Rows list various configurations from 20+20+35+35+71 to 35+35+35+35+42.

11 Energy Label Scale from A+++ to D.